

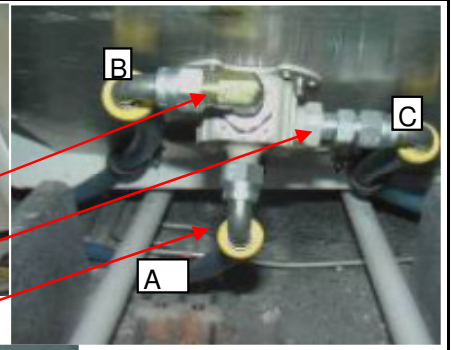
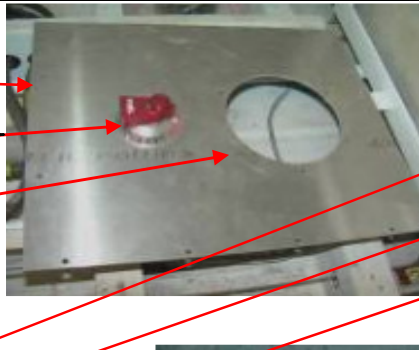
**Parts Needed**

1x PR51078 - Elbow Fitting 90deg-6 AN833-6D  
2X PR51083 - Elbow Fitting 45deg-6 AN837-6D  
3x PR51085 - Nut 924-6D  
1x PR51086 - Hose fitting adaptor 0700-156  
1x PR51113 - Fuel Valve FS20X3-F  
1x PR51166 - Weldon Fuel Pump 07-00785  
3x PR51228 - Pushlock Parker Fitting Straight  
2x PR51229A - Pushlock Parker Fitting 45 deg  
7x PR51229B - Pushlock Parker Fittings 90 deg  
1x PR51230A - Adaptor Fittings Straight  
2x PR51230B - Adaptor Fittings Straight  
1x PR51230D - Adaptor Fitting 90 deg  
2x PR51247 - Fuel Filter  
1x CR51052 - Fuel Selector Cover  
1x CR51117 - Inspection Cover Round  
4x MR51101 - Fuel Filter Hose Adaptors  
1x LR51116 - Fuel Selector Finishing Dome  
6x Selftappers  
6x Speednuts  
2x Selftappers 3mm (Black)  
12x M4 Countersunk Screws 16mm 3x Anchor Nuts  
9x M4 Nylocks  
6x Hose Clamps (Medium)  
5x P Clamps  
4x Hose Clamps (Small)  
1x Venolic Base (For Fuel Pump)  
1x Self Manufactured Bracket (For Fuel filter)  
5x Grommets  
2x Cable Ties                      Rubber to secure pump  
6m Fuel lines (Pushlock Parker)

**FUEL LINES ASSEMBLY  
AR51017**

Fuel Selector

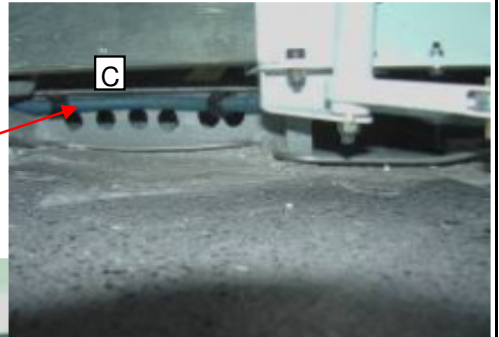
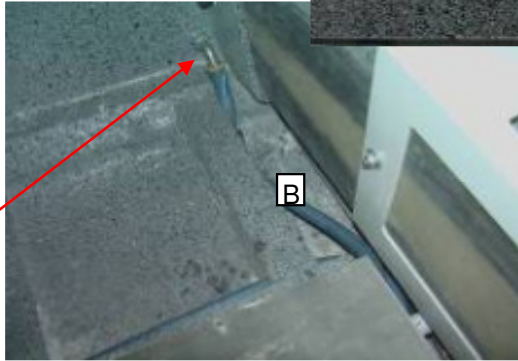
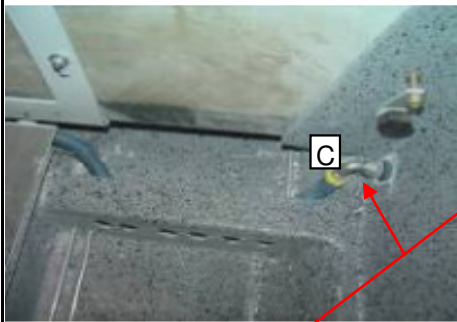
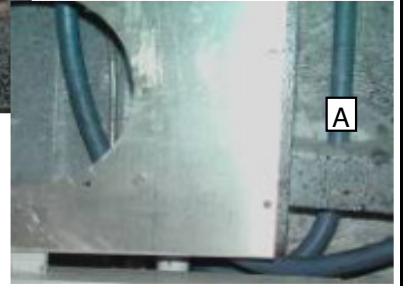
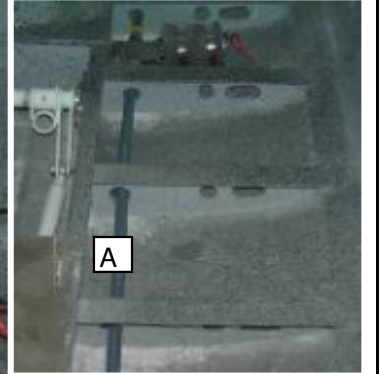
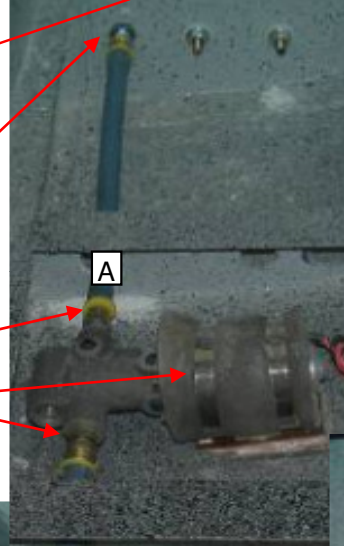
- 1x CR51052 - Fuel Selector Cover
- 1x Fuel Valve - FS20X3-F
- 3x M4 Countersunk Screw 16mm 3x Anchor Nuts
- 1x CR51117 - Inspection Cover Round
- 6x Selftappers 6x Speednuts
- 1x LR51116 - Fuel Selector Finishing Dome
- 2x Selftappers 3mm (Black)



- 1x PR51230D - Adaptor Fitting 90 deg - 6
- 1x PR51230A - Adaptor Fittings Straight - 6
- 3x PR51229B - Pushlock Parker Fittings - 6 90deg
- 2x P Clamps 2x M4 Countersunk Screw 16mm
- 2x M4 Nylocks

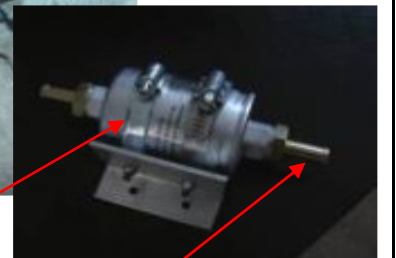
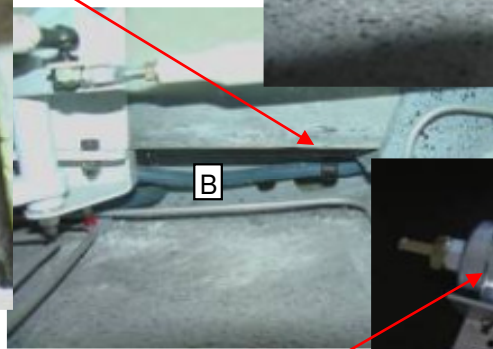
Electric Fuel Pump

- 1x PR51166 - Weldon Fuel Pump - 07-00785
- 1x PR51078 - Elbow Fitting 90 degree - 6 AN833-6D
- 1x PR51085 - 924-6D Nut
- 3x PR51228 - Pushlock Parker Fitting Straight -6
- 2x PR51230B - Adaptor Fittings Straight - 6
- 1x PR51086- Hose fitting adaptor 0700-156
- 2x Hose Clamps (Med) Rubber to secure pump 2m Fuel lines
- Self man. Venolic Base



Fuel Filter

- 2x PR51229B - Pushlock Parker Fitting 90 deg -6
- 3x M4 Countersunk 16mm 3x M4 Nylocks
- C= 2x P Clamps Back
- B=1x P Clamp Back



- 1x PR51083 - Elbow Fitting 45 degree - 6 AN837-6D
  - 1x PR51085 - 924-6D Nut
  - 1x PR51229B - Pushlock Parker Fitting 90 degree -6
  - 2x Small Hose Clamps
  - 1x 2m fuel lines
  - 1x PR51229A - Pushlock Parker Fitting 45deg -6
- x2

- 1x PR51247 - Fuel Filter
  - 2x MR51101 - Fuel Filter Hose Adaptors
  - 2x Med Clamps 1x Self Man. Brkt
  - 2x M4 Countsunk 16mm 2x Nylock
- x2

**AR51017  
FUEL LINES ASSEMBLY**